



Major's Lodge - Watatunga Wildlife Reserve

Plough Lane, Watlington, Norfolk, PE33 0HQ

01553 396 007 (tel:01553 396 007).

Visit website (<https://watatunga.co.uk/majors-lodge/>).



Access Guide



Photos



Accommodation Overview

About

[View](#)

- Major's Lodge is one of three self-catering accommodation options at Watatunga Wildlife Reserve. All guests at Major's Lodge have exclusive access to a wheelchair accessible buggy for their whole stay.
- There are 4 bedrooms in total.
- There is step-free level access to all bedrooms.

Parking and Public Transport

[View](#)

- The venue has its own car park.
- The nearest train station is Watlington.
- **For the latest travel options and information you can plan your travel using Google Maps (opens new tab) (<https://maps.app.goo.gl/Jqmh1AEG2V6wZCfP6>).**

Getting In and Around

[View](#)

- There is step-free access via ramp at the most accessible entrance.
- There is step-free level access throughout.
- Access throughout may include manual doors.
- The following facilities are available: a seat/chair, bath mats and mobility scooter charging facilities.
- **View more information on borrowing or hiring equipment (opens new tab) (<https://www.shelden-healthcare.co.uk/>).**

- The venue can provide large print documents.
- Staff receive the following training: Dementia Awareness Training, First Aid and Safeguarding Training.

Related Access Guides

View

- [View information on Tours and Events - Watatunga Wildlife Reserve \(opens new tab\)](https://www.accessable.co.uk/england/access-guides/tours-and-events-watatunga-wildlife-reserve)
(<https://www.accessable.co.uk/england/access-guides/tours-and-events-watatunga-wildlife-reserve>).

Parking

Photos



- The car park is located directly in front of the lodge.
- The car park is open air/surface.
- The most accessible route from the Blue Badge parking has uneven surfaces.
- Parking is free for all users.

Entrance

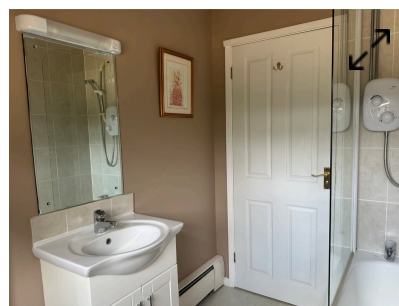
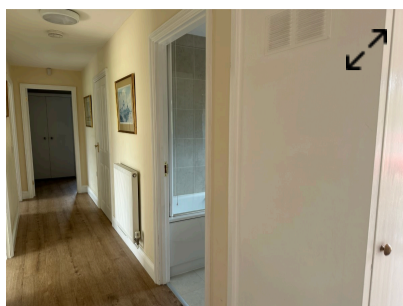
Photos



- This entrance is located at the front of the lodge.
- There is step-free access via ramp at the entrance.
- The ramp is between 75cm and 150cm wide with handrails on both sides.
- The ramp bypasses the steps.
- There are 2 steps which are unmarked, with no handrails.
- There is a key safe at a height of 150cm.
- There is a key lock at a height of 92cm.
- There is a single manual door at this entrance.
- The door opens away from you.
- The width of the opening is 85cm.
- The key safe is located across from the main entrance, to the left side next to the side access door
- There is a threshold at the main entrance that is 3.5cm high.
- There is step-free level access as you enter.

Standard Bathroom (Bathroom 1)

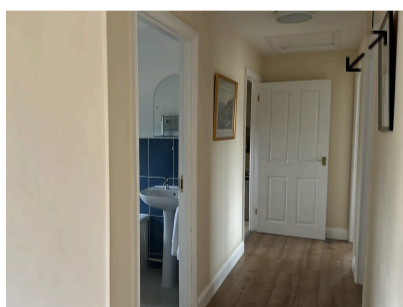
Photos



- The bathroom surveyed is located to the right after entering the lodge.
- The most accessible route to the bathroom has step-free level access.
- There is step-free level access into the bathroom.
- The bathroom door opens inwards.
- The width of the door opening is 70cm.
- There is not room for a wheelchair user to manoeuvre (150cm x 150cm).
- There is not a lateral transfer space next to the toilet.
- There is a wash basin, a bar of soap and a hand towel available.
- The wash basin has a twist/turn tap.
- Additional features include: a mirror and coat hooks.
- The bathroom has a waste bin.
- The bathroom has a bath with an overhead shower.
- The bath controls are lever.
- The shower has an adjustable shower head which can be detached.
- The shower controls are push.
- The toilet is 40cm high.

Standard Bathroom (Bathroom 2)

Photos



- The bathroom surveyed is located to the left after entering the lodge.
- The most accessible route to the bathroom has step-free level access.
- There is step-free level access into the bathroom.
- The bathroom door opens inwards.
- The width of the door opening is 72cm.
- There is not room for a wheelchair user to manoeuvre (150cm x 150cm).
- There is not a lateral transfer space next to the toilet.
- There is a wash basin, a bar of soap and a hand towel available.
- The wash basin has a twist/turn tap.

- Additional features include: a mirror and a coat hook.
- The bathroom has a waste bin.
- The bathroom has a standard bath.
- The bath controls are twist/turn.
- The toilet seat is 40cm high.

Kitchen

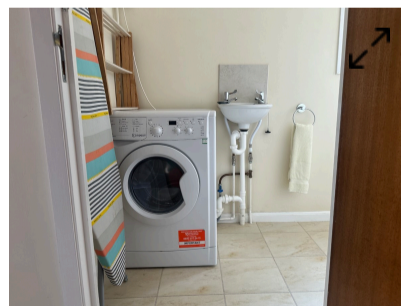
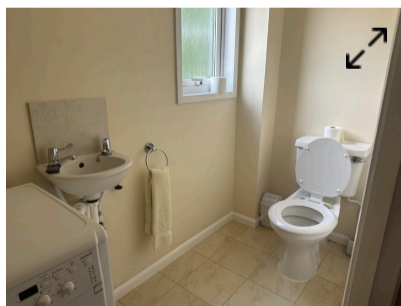
Photos



- The kitchen is located left after entering the lodge.
- There is step-free level access into the kitchen.
- There is a single manual door which opens towards you.
- The width of the opening is 79cm.
- There is room for a wheelchair user to manoeuvre (150cm x 150cm).
- The kitchen has overhead cupboards and under counter cupboards.
- The work surface is 93cm from the floor.
- The hob is 93cm from the floor.
- The oven is not at a suitable height for a wheelchair user.
- The sink is 93cm from the floor.
- The sink has a twist turn mixer tap.
- Facilities within the kitchen include a fridge freezer, a dishwasher, a microwave, a kettle and a toaster.
- The following machines are at a suitable height for a wheelchair user: dishwasher.

Utility Room (with Toilet)

Photos



- The utility room is located off the main kitchen, next to the side door.
- There is step-free level access into the utility room.
- There is a single manual door which opens towards you.
- The width of the opening is 69cm.
- There is not room for a wheelchair user to manoeuvre (150cm x 150cm).
- The sink is 86cm from the floor.
- The sink has a lever tap.

- Facilities within the room include a washing machine.
- The following machines are at a suitable height for a wheelchair user: washing machine.
- There is an toilet in this room that is 48cm high.

Dining Room

Photos



- The dining room is located beyond the kitchen to the left.
- There is step-free level access into the dining room.
- There is a single manual door which opens away from you.
- The width of the opening is 71cm.
- There is room for a wheelchair user to manoeuvre (150cm x 150cm).
- Seating available in the room includes: chairs with armrests and chairs without armrests.
- Furniture available in the room includes: tables and coffee tables.

Lounge

Photos

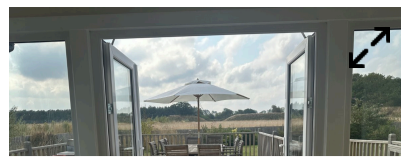


- The lounge is located through the dining room.
- There is step-free level access into the lounge.
- There is a single manual door which opens away from you.
- The width of the opening is 79cm.
- There is room for a wheelchair user to manoeuvre (150cm x 150cm).
- Seating available in the lounge includes: chairs with armrests, armchairs and sofas.
- Furniture available in the lounge includes: coffee tables.
- There is a TV with subtitles.

Seating Area (Sun Room)

Photos

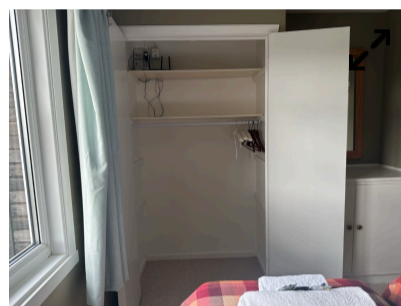




- The seating area is located off the main lounge.
- The most accessible route to the seating area has step-free level access and manual doors.
- There is step-free level access throughout the seating area.
- There is room for a wheelchair user to manoeuvre (150cm x 150cm).
- Seating available in this area includes: sofas and stools.
- Furniture available in this area includes: tables and coffee tables.
- There is no (or very little) background noise in this area.
- The opening into the Sun Room is 110cm wide.

Standard Bedroom (Bedroom 1 - King Size / Zip Link Twin)

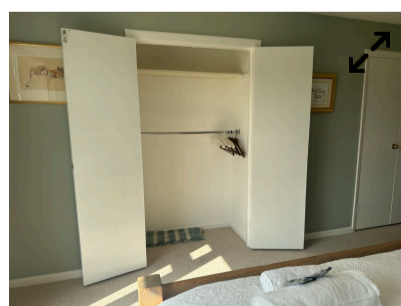
Photos



- The bedroom surveyed is located to the left after entering the lodge, on the right side.
- The most accessible route to the bedroom has step-free level access.
- There is step-free level access into the bedroom.
- The door opens inwards.
- The width of the door opening is 79cm.
- The bedroom has twin beds.
- The top of the mattress is 61cm from the floor.
- The space under the bed is 4cm from the floor.
- There is not room for a wheelchair user to manoeuvre next to the bed (150cm x 150cm).
- The following is available in this bedroom: wardrobes for seated users and bedside plug sockets.

Standard Bedroom (Bedroom 2 - Super King)

Photos



- The bedroom surveyed is located to the right after entering the lodge, immediately on the left side.
- The most accessible route to the bedroom has step-free level access.
- There is step-free level access into the bedroom.

- The door opens inwards.
- The width of the door opening is 81cm.
- The bedroom has a double bed.
- The top of the mattress is 62cm from the floor.
- The space under the bed is 20cm from the floor.
- Furniture can be moved to enable a manoeuvring space next to the bed (150cm x 150cm).
- The following is available in this bedroom: wardrobes for seated users and bedside plug sockets.
- There is a vanity sink with twist turn taps with a height of 91cm.

Standard Bedroom (Bedroom 3 - King Size / Zip Link Twin)

Photos



- The bedroom surveyed is located to the right after entering the lodge, past Bedroom 2 on the left side.
- The most accessible route to the bedroom has step-free level access.
- There is step-free level access into the bedroom.
- The door opens inwards.
- The width of the door opening is 81cm.
- The bedroom has twin beds.
- The top of the mattress is 62cm from the floor.
- The space under the bed is 4cm from the floor.
- Furniture can be moved to enable a manoeuvring space next to the bed (150cm x 150cm).
- The following is available in this bedroom: wardrobes for seated users and bedside plug sockets.
- This room can accommodate a profiling bed if required.
There is a vanity sink with twist turn taps at a height of 91cm.

Standard Bedroom (Bedroom 4 - Super King)

Photos



- The bedroom surveyed is located to the right after entering the lodge, at the end of the hallway.
- The most accessible route to the bedroom has step-free level access.
- There is step-free level access into the bedroom.
- The door opens inwards.
- The width of the door opening is 71cm.

- The bedroom has a double bed.
- The top of the mattress is 62cm from the floor.
- The space under the bed is 21cm from the floor.
- There is not room for a wheelchair user to manoeuvre next to the bed (150cm x 150cm).
- The following is available in this bedroom: wardrobes for seated users and bedside plug sockets.
- There is a vanity sink with twist turn taps with a height of 91cm.

Bathroom with Adaptations (Right Hand Transfer)

Photos



Location and Access

View

- The bathroom surveyed is located to the right after entering the lodge, on the right side, past the standard bathroom.
- The most accessible route to the bathroom has step-free level access.
- There is step-free level access into the bathroom.
- The door opens outwards.
- The width of the door opening is 80cm.
- The door has a twist lock.

Dimensions and Features

View

- There is room for a wheelchair user to manoeuvre (150cm x 150cm).
- There is a lateral transfer space to the right as you face the toilet, however it is obstructed.
- The lateral transfer space is 170cm (from the side of the toilet pan to the wall).
- There is a spatula flush on the non-transfer side.
- There is a horizontal grab rail on the non-transfer side.
- There is a vertical grab rail on the transfer side.
- There is a dropdown rail on the transfer side.
- The toilet seat is 48cm from the floor.
- There is a wash basin, a bar of soap and a hand towel available.
- The wash basin has a lever mixer tap.
- The vertical grab rails are on both sides of the wash basin.
- There is no emergency alarm.
- The bathroom has a waste bin.
- Additional features include: a mirror, coat hooks and a shelf.
- The bathroom has a wheel-in shower.
- There is room for a wheelchair user to manoeuvre in the shower (150cm x 150cm).
- The shower has an adjustable shower head which can be detached, a shower seat and wall-mounted grab rails.
- The shower seat is 48cm from the floor.

- The shower controls are lever mixer.

Seating Area (Decking and Garden Area)

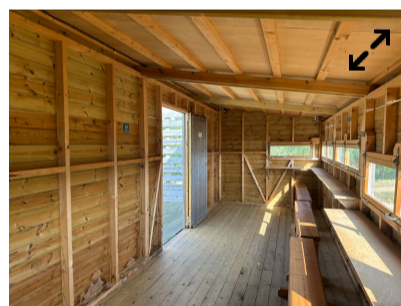
Photos



- The seating area is located outside of the Sun Room.
- The seating area is uncovered.
- The most accessible route to the seating area has step-free level access and manual doors.
- There is step-free level access throughout the seating area.
- The following areas have step-free access via ramps or slopes: grassed area.
- There is room for a wheelchair user to manoeuvre (150cm x 150cm).
- Seating available in this area includes: chairs with armrests.
- Furniture available in this area includes: tables.
- There is no (or very little) background noise in this area.

Area (Private Hide and Nature Trail)

Photos



- The Private Hide and Nature Trail are located off the main car park, to the front and left of the lodge.
- There is step-free access via ramp into this area.
- The ramp is between 75cm and 150cm wide with handrails on both sides.
- There is a key pad at a height of 122cm.
- There is a single automatic door which opens away from you.
- The width of the opening is 223cm.
- The key pad to exit is 118cm high.
- Facilities available in this area include: a Private Hide and Nature Trail.
- There is step-free level access throughout the majority of areas.
- The following areas have step-free access via ramps or slopes: Private Hide and Nature Trail.
- Access throughout the area may include uneven surfaces and automatic doors.
- There is room for a wheelchair user to manoeuvre (150cm x 150cm).
- Seating available in this area includes: benches.
- There is not a hearing assistance system.

- There is no (or very little) background noise in this area.
- The width of the door to the Private Hide is 92cm.